

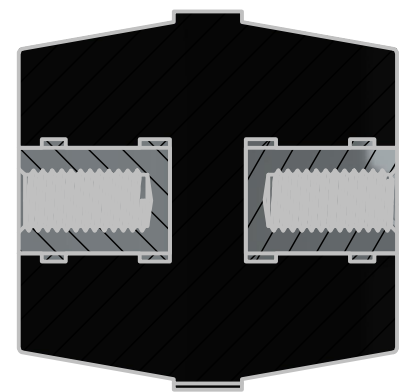
4

3

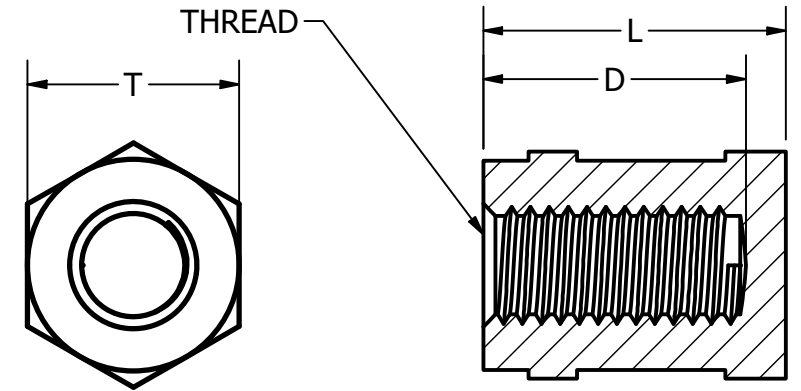
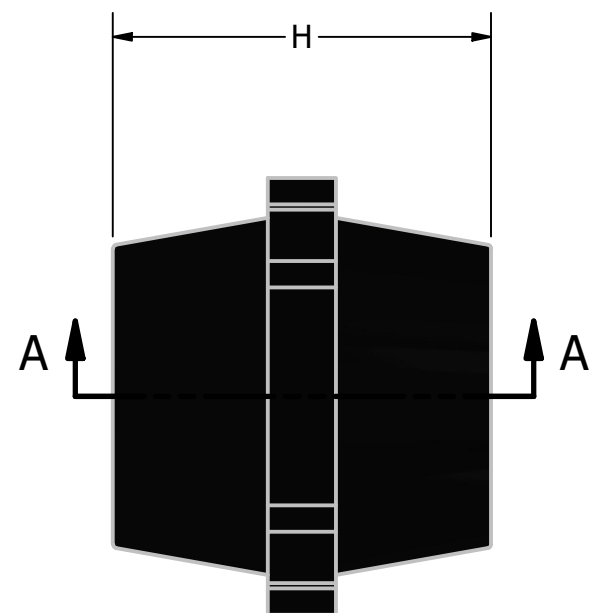
2

1

PART #	W	Ø	H	THREAD	L	D	T
ISOTP PH 830 (M8)-V0	1.18 [30]	1.02 [26]	1.18 [30]	M8	.47 [12]	.35 [9]	.55 [14]
ISOTP PH835 (M8)-V0	1.57 [40]	1.33 [34]	1.38 [35]	M8	.59 [15]	.47 [12]	.63 [16]
ISOTP PH1035 (M10)-V0	1.57 [40]	1.33 [34]	1.38 [35]	M10	.59 [15]	.47 [12]	.63 [16]
ISOTP PH850 (M8)-V0	1.97 [50]	1.57 [40]	1.97 [50]	M8	.67 [17]	.79 [20]	.63 [16]
ISOTP PH1050 (M10)-V0	1.97 [50]	1.57 [40]	1.97 [50]	M10	.67 [17]	.79 [20]	.63 [16]



SECTION A-A
SCALE 1 : 1



INSERT MATERIAL:
MILD STEEL (ZINC PLATED)

UNLESS OTHERWISE SPECIFIED:
DIMENSIONS ARE IN INCHES [mm]
TOLERANCES:
DECIMALS: ANGULAR:
.X ± .030 ± 0.5°
.XX ± .020 FRACTIONAL:
.XXX ± .010 ± 1/16"
FINISH ON MACHINED SURFACES
125µm MIN.
DO NOT SCALE DRAWING

DRAWN	RThompson	10/16/2024
CHECKED		
APPROVED		

Third Angle Projection

THE GUND COMPANY
MANUFACTURERS & FABRICATORS OF ENGINEERED MATERIAL SOLUTIONS

TITLE
ISO_TP SERIES STANDOFF

SIZE	LOCATION	DWG NO	REV
B	CORP	PCORSGMAT-00002.dwg	0
SCALE	MATERIAL	SHEET 1 OF 1	
1 : 1	PA66		

4

3

2

1