



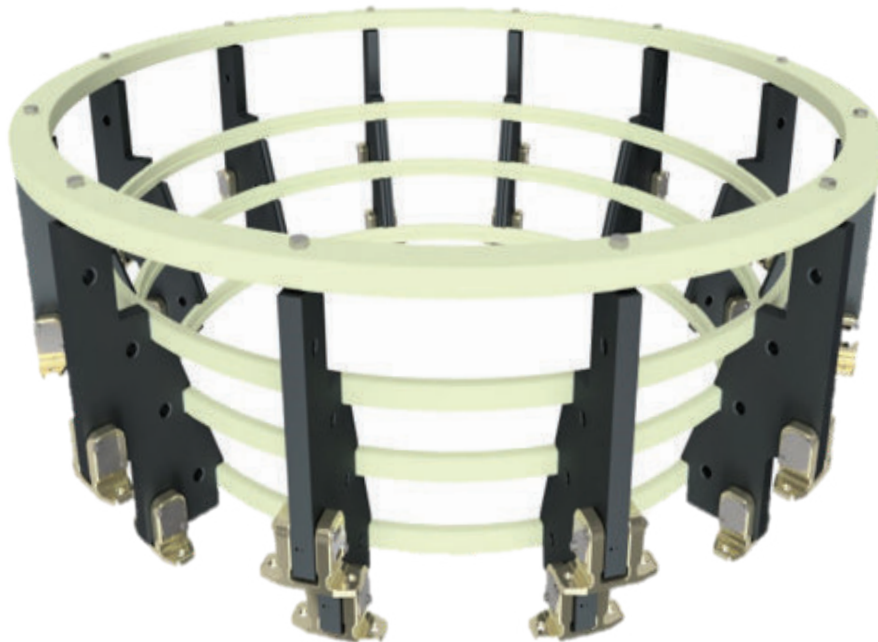
# THE GUND COMPANY

MANUFACTURERS & FABRICATORS OF ENGINEERED MATERIAL SOLUTIONS

## End Winding Support Systems

The end-winding support system (basket) of a generator plays a critical role in ensuring reliability. Subject to significant forces and movement during operation, these systems require a balance of stiffness and flexibility in various directions. Multiple components, such as brackets, gunstocks, blocks, and surge rings, are intricately assembled to form this important structure. Over time, wear and tear, along with outdated materials, can compromise the integrity of end-winding support systems, leading to issues such as looseness or broken components.

The Gund Company (TGC) can work with customers to manufacture and assemble a stator endwinding system to fully support your needs. Whether you require an assembled end-winding system ready for installation onto the stator core or prefer an unassembled kit for on-site assembly, TGC has you covered. Our team works closely with yours to deliver high-quality solutions that work. Contact The Gund Company today to explore how our expertise can support your needs.

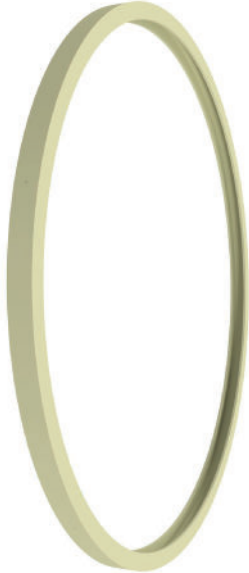


<b>Item:</b>	<b>Axial Supports (Gunstocks)</b>
<b>Description:</b>	TGC can fabricate axial supports at almost any of our facilities worldwide. By manufacturing each component of the basket assembly in-house, we can ensure the correct fit before it arrives on-site and provide individual components in case of repairs.
<b>Typical Materials:</b>	NEMA G11, NEMA GPO-3, Post-Baked Black Canvas (PBBC)
<b>Typical Thickness:</b>	1"-2"

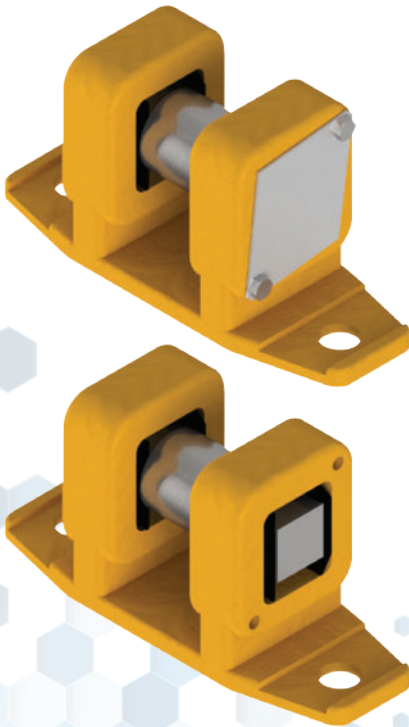


# THE GUND COMPANY

MANUFACTURERS & FABRICATORS OF ENGINEERED MATERIAL SOLUTIONS



<b>Item:</b>	<b>Support Rings</b>		
<b>Description:</b>	TGC pioneered an industry-leading process for creating large-diameter stator support and surge rings. TGC can fabricate these rings according to any custom dimensions and stocks mandrels for common sizes. Features such as chamfers and holes can be machined in these rings.		
<b>Typical Materials:</b>	Polyester/Epoxy Reinforced Glass Roving		
<b>Typical ID:</b>	38"-100"	<b>Typical OD:</b>	43"-105"
<b>Max Wall Thickness:</b>	5"	<b>Typical Ring Thickness:</b>	1"-3"



<b>Item:</b>	<b>Attachment Brackets</b>		
<b>Description:</b>	TGC provides the brass brackets to attach the composite basket parts to the stator core. These brackets are assemblies that use Chemloy bearing pads to allow for the thermal expansion of the entire basket assembly while still providing complete support. All components can be manufactured in our metal machining shop or outsourced to 3rd parties if capacity is required.		
<b>Typical Materials:</b>	Brass, Stainless Steel, Chemloy Pads		

*Data supplied above are typical values and are not to be considered specification values. All of the information, suggestions and recommendations pertaining to the properties and uses of the products herein are based upon tests and data believed to be accurate; however, the final determination regarding suitability of any material described herein for the contemplated application, the manner of such use, and whether the use infringes any patents is the sole responsibility of the user. There is no warranty, expressed or implied, including, without limitation warranty of merchantability or fitness for a particular purpose. Under no circumstances shall we be liable for incidental or consequential loss or damage.*