



THE GUND COMPANY

MANUFACTURERS & FABRICATORS OF ENGINEERED MATERIAL SOLUTIONS

Bearing Resistance Temperature Detectors (RTDs) And Accesories

Bearing RTDs are temperature sensor devices inserted at an opening on the bearing housing. They are used in electric motors and generators for continuous bearing temperature measurement. Bearing sensors can be used with a fluid-sealed, adjustable spring-loaded holder for proper loading in any hole depth to maintain contact with the bearing surface. Sensors are constructed in three diameters. RTDs are composed of a stainless-steel tube with a copper alloy tip.



The data supplied are typical values. They are not to be considered specification values. All of the information, suggestions, and recommendations about these properties and uses of the products herein are based on tests and data believed to be accurate; however, the final determination regarding the suitability of any material described herein for the contemplated application, the manner of such use, and whether the use infringes any patents is the sole responsibility of the user. There is no warranty - expressed or implied - including, without limitation, warranties of merchantability or fitness for a particular purpose. Under no circumstances shall we be liable for incidental or consequential loss or damage.



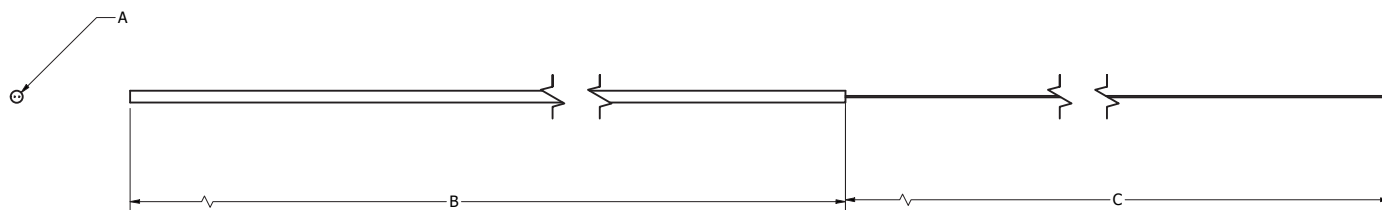
THE GUND COMPANY

MANUFACTURERS & FABRICATORS OF ENGINEERED MATERIAL SOLUTIONS

Bearing Resistance Temperature Detectors (RTDs)

ISOLATED Single Element Bearing RTD Probes

THE GUND COMPANY		Probe Dia. (A)	Probe Dia. (B)	Wire Lgth. (C)	Wire Gauge	Element Type	Tube Material	Tip Material
PART ID	RTDBPPu360.18822963G11Cu	0.188"	36"	96"	22	Platinum	G-11	Cu
	RTDBPPu360.21522963G11Cu	0.215"	36"	96"	22	Platinum	G-11	Cu
	RTDBPPu360.25022963G11Cu	0.250"	36"	96"	22	Platinum	G-11	Cu
	RTDBPPu360.1882296316SSCu	0.188"	36"	96"	22	Platinum	SS	Cu
	RTDBPPu360.2152296316SSCu	0.215"	36"	96"	22	Platinum	SS	Cu
	RTDBPPu360.2502296316SSCu	0.250"	36"	96"	22	Platinum	SS	Cu
	RTDBPCu360.18822963G11Cu	0.188"	36"	96"	22	Copper	G-11	Cu
	RTDBPCu360.21522963G11Cu	0.215"	36"	96"	22	Copper	G-11	Cu
	RTDBPCu360.25022963G11Cu	0.250"	36"	96"	22	Copper	G-11	Cu
	RTDBPCu360.1882296316SSCu	0.188"	36"	96"	22	Copper	SS	Cu
	RTDBPCu360.2152296316SSCu	0.215"	36"	96"	22	Copper	SS	Cu
	RTDBPCu360.2502296316SSCu	0.250"	36"	96"	22	Copper	SS	Cu



WIRE COLOR CODE	Color	Quantity
Three-Wire	White	2
	Red	1

The data supplied are typical values. They are not to be considered specification values. All of the information, suggestions, and recommendations about these properties and uses of the products herein are based on tests and data believed to be accurate; however, the final determination regarding the suitability of any material described herein for the contemplated application, the manner of such use, and whether the use infringes any patents is the sole responsibility of the user. There is no warranty - expressed or implied - including, without limitation, warranties of merchantability or fitness for a particular purpose. Under no circumstances shall we be liable for incidental or consequential loss or damage.



THE GUND COMPANY

MANUFACTURERS & FABRICATORS OF ENGINEERED MATERIAL SOLUTIONS

Bearing Resistance Temperature Detectors (RTDs)

ISOLATED Dual Element Bearing RTD Probes

THE GUND COMPANY		Probe Dia. (A)	Probe Dia. (B)	Wire Lgth. (C)	Wire Gauge	Element Type	Tube Material	Tip Material
PART ID	RTD2BPPu360.18826966G11Cu	0.188"	36"	96"	26	Platinum	G-11	Cu
	RTD2BPPu360.21526966G11Cu	0.215"	36"	96"	26	Platinum	G-11	Cu
	RTD2BPPu360.25022966G11Cu	0.250"	36"	96"	22	Platinum	G-11	Cu
	RTD2BPPu360.18826966316SSCu	0.188"	36"	96"	26	Platinum	SS	Cu
	RTD2BPPu360.21526966316SSCu	0.215"	36"	96"	26	Platinum	SS	Cu
	RTD2BPPu360.25022966316SSCu	0.250"	36"	96"	22	Platinum	SS	Cu
	RTD2BPCu360.18826966G11Cu	0.188"	36"	96"	26	Copper	G-11	Cu
	RTD2BPCu360.21526966G11Cu	0.215"	36"	96"	26	Copper	G-11	Cu
	RTD2BPCu360.25022966G11Cu	0.250"	36"	96"	22	Copper	G-11	Cu
	RTD2BPCu360.18826966316SSCu	0.188"	36"	96"	26	Copper	SS	Cu
	RTD2BPCu360.21526966316SSCu	0.215"	36"	96"	26	Copper	SS	Cu
	RTD2BPCu360.25022966316SSCu	0.250"	36"	96"	22	Copper	SS	Cu



WIRE COLOR CODE	Color	Quantity
Six-Wire	White	2
	Red	1
	Yellow	2
	Blue	1

The data supplied are typical values. They are not to be considered specification values. All of the information, suggestions, and recommendations about these properties and uses of the products herein are based on tests and data believed to be accurate; however, the final determination regarding the suitability of any material described herein for the contemplated application, the manner of such use, and whether the use infringes any patents is the sole responsibility of the user. There is no warranty - expressed or implied - including, without limitation, warranties of merchantability or fitness for a particular purpose. Under no circumstances shall we be liable for incidental or consequential loss or damage.



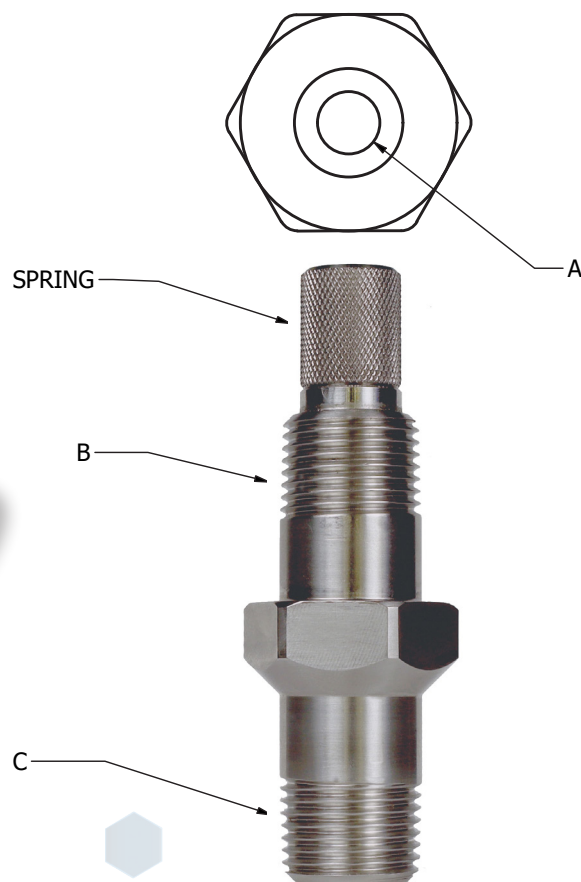
THE GUND COMPANY

MANUFACTURERS & FABRICATORS OF ENGINEERED MATERIAL SOLUTIONS

Bearing Resistance Temperature Detectors (RTDs)

RTD Probe Holder

THE GUND COMPANY		Style	Probe Diameter (A)	Connection Head Thread (B)	Process Thread (C)	Material
PART ID	RTDPH.188.500.500SSS	Probe Holder With Spring	0.188"	0.50" - 14 NPT Male	0.50" - 14 NPT Male	Stainless Steel
	RTDPH.188.500.750SSS	Probe Holder With Spring	0.188"	0.50" - 14 NPT Male	0.75" - 14 NPT Male	Stainless Steel
	RTDPH.188.750.500SSS	Probe Holder With Spring	0.188"	0.75" - 14 NPT Male	0.50" - 14 NPT Male	Stainless Steel
	RTDPH.188.750.750SSS	Probe Holder With Spring	0.188"	0.75" - 14 NPT Male	0.75" - 14 NPT Male	Stainless Steel
	RTDPH.215.500.500SSS	Probe Holder With Spring	0.215"	0.50" - 14 NPT Male	0.50" - 14 NPT Male	Stainless Steel
	RTDPH.215.500.750SSS	Probe Holder With Spring	0.215"	0.50" - 14 NPT Male	0.75" - 14 NPT Male	Stainless Steel
	RTDPH.215.750.500SSS	Probe Holder With Spring	0.215"	0.75" - 14 NPT Male	0.50" - 14 NPT Male	Stainless Steel
	RTDPH.215.750.750SSS	Probe Holder With Spring	0.215"	0.75" - 14 NPT Male	0.75" - 14 NPT Male	Stainless Steel
	RTDPH.250.500.500SSS	Probe Holder With Spring	0.250"	0.50" - 14 NPT Male	0.50" - 14 NPT Male	Stainless Steel
	RTDPH.250.500.750SSS	Probe Holder With Spring	0.250"	0.50" - 14 NPT Male	0.75" - 14 NPT Male	Stainless Steel
	RTDPH.250.750.500SSS	Probe Holder With Spring	0.250"	0.75" - 14 NPT Male	0.50" - 14 NPT Male	Stainless Steel
	RTDPH.250.750.750SSS	Probe Holder With Spring	0.250"	0.75" - 14 NPT Male	0.75" - 14 NPT Male	Stainless Steel



The data supplied are typical values. They are not to be considered specification values. All of the information, suggestions, and recommendations about these properties and uses of the products herein are based on tests and data believed to be accurate; however, the final determination regarding the suitability of any material described herein for the contemplated application, the manner of such use, and whether the use infringes any patents is the sole responsibility of the user. There is no warranty - expressed or implied - including, without limitation, warranties of merchantability or fitness for a particular purpose. Under no circumstances shall we be liable for incidental or consequential loss or damage.



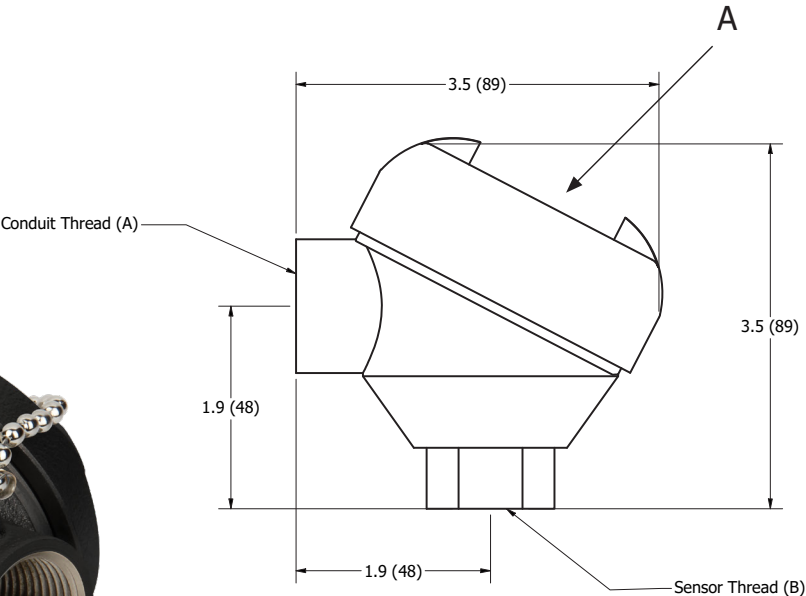
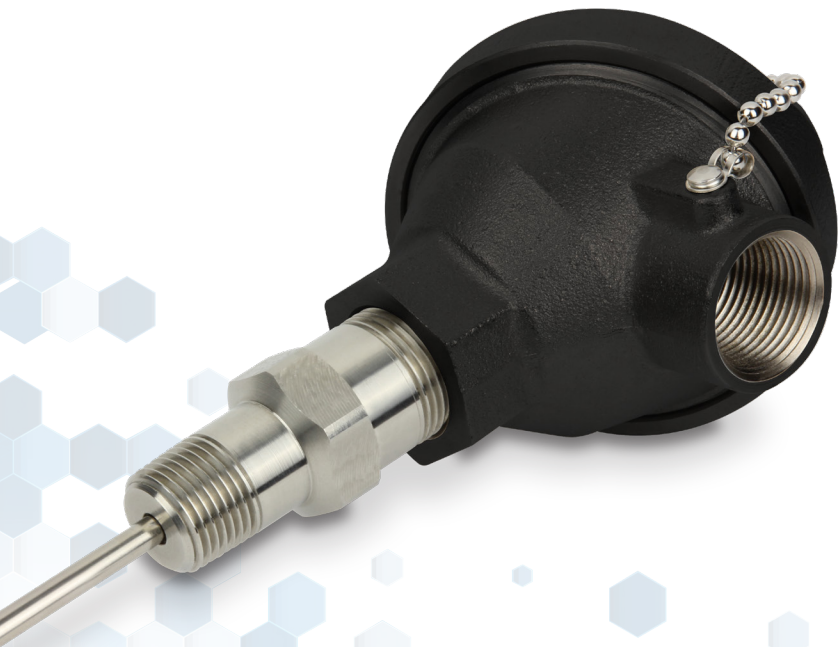
THE GUND COMPANY

MANUFACTURERS & FABRICATORS OF ENGINEERED MATERIAL SOLUTIONS

Resistance Temperature Detector (RTD)

RTD Connection Head (Nickel Plated Cast Iron)

THE GUND COMPANY		Style	Size (L x H)	Conduit Thread (A)	Conduit Thread (B)	Material
PART ID	RTDCH3.500.500.750NIFE	Connection Head	3.50"	0.50"	0.75"	Nickel Plated Cast Iron
	RTDCH3.500.750.750NIFE	Connection Head	3.50"	0.75"	0.75"	Nickel Plated Cast Iron
	RTDCH3.500.500.500NIFE	Connection Head	3.50"	0.50"	0.50"	Nickel Plated Cast Iron
	RTDCH3.500.750.500NIFE	Connection Head	3.50"	0.75"	0.50"	Nickel Plated Cast Iron



The data supplied are typical values. They are not to be considered specification values. All of the information, suggestions, and recommendations about these properties and uses of the products herein are based on tests and data believed to be accurate; however, the final determination regarding the suitability of any material described herein for the contemplated application, the manner of such use, and whether the use infringes any patents is the sole responsibility of the user. There is no warranty - expressed or implied - including, without limitation, warranties of merchantability or fitness for a particular purpose. Under no circumstances shall we be liable for incidental or consequential loss or damage.



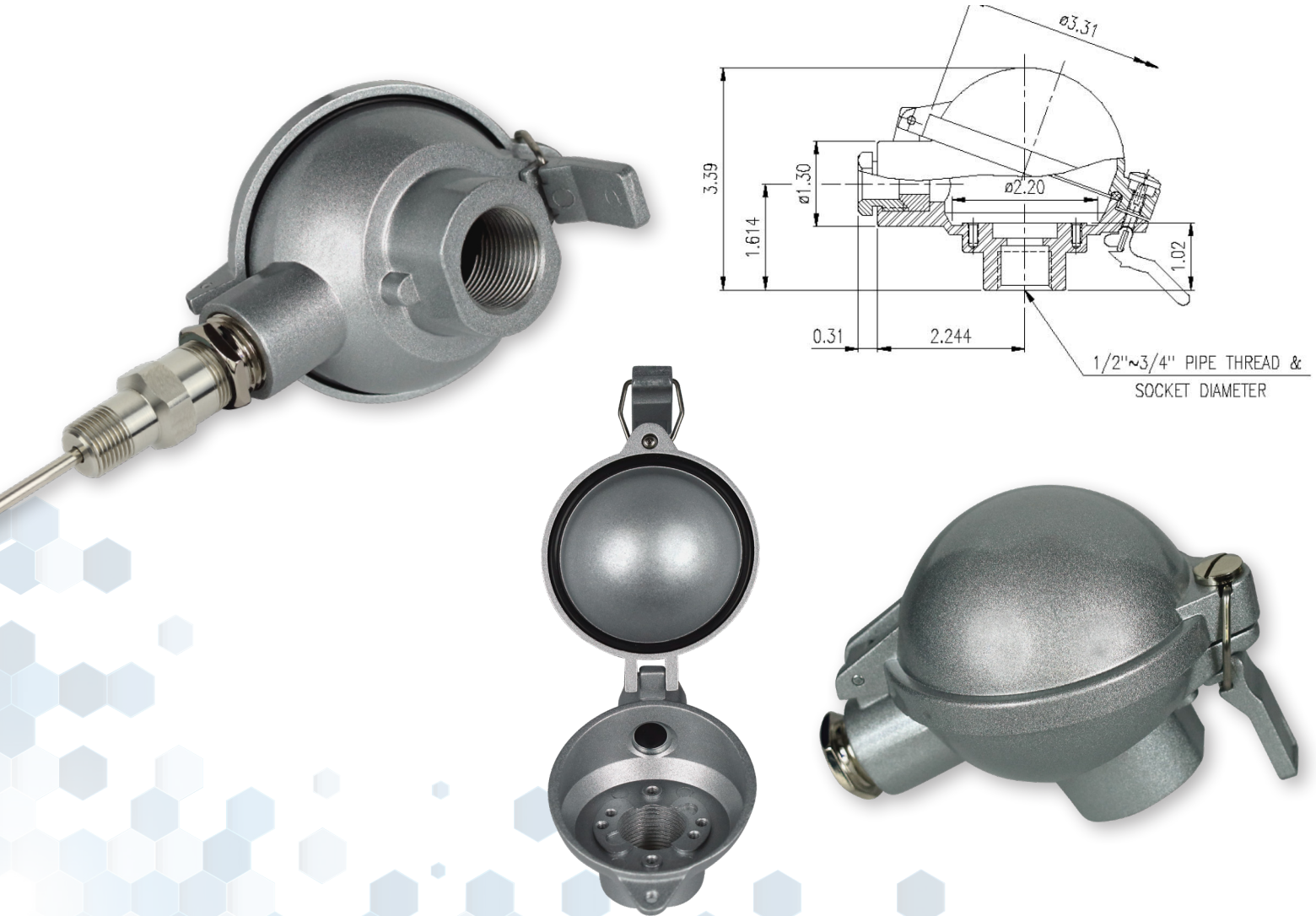
THE GUND COMPANY

MANUFACTURERS & FABRICATORS OF ENGINEERED MATERIAL SOLUTIONS

Resistance Temperature Detector (RTD)

RTD Connection Head (Cast Aluminum)

THE GUND COMPANY		Style	Size (L x H)	Conduit Thread (A)	Conduit Thread (B)	Material
PART ID	RTDCH3.300.500.750ALH	Flip Top Conn. Head	3.10"	0.50"	0.50"	Cast Aluminum
	RTDCH3.300.750.750ALH	Flip Top Conn. Head	3.10"	0.50"	0.75"	Cast Aluminum



The data supplied are typical values. They are not to be considered specification values. All of the information, suggestions, and recommendations about these properties and uses of the products herein are based on tests and data believed to be accurate; however, the final determination regarding the suitability of any material described herein for the contemplated application, the manner of such use, and whether the use infringes any patents is the sole responsibility of the user. There is no warranty - expressed or implied - including, without limitation, warranties of merchantability or fitness for a particular purpose. Under no circumstances shall we be liable for incidental or consequential loss or damage.



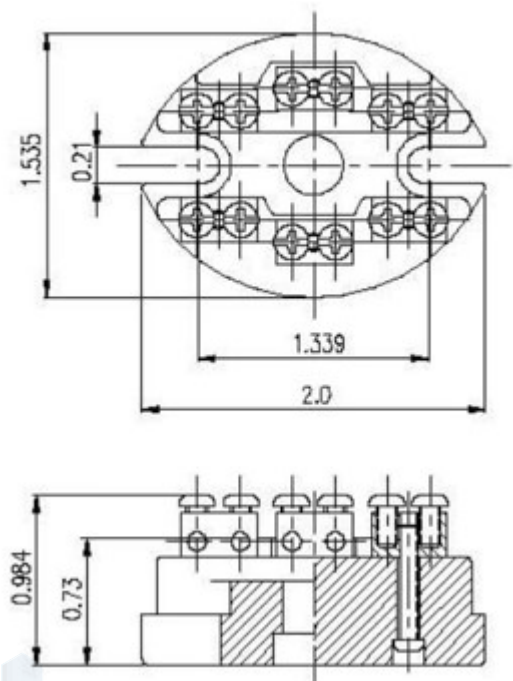
THE GUND COMPANY

MANUFACTURERS & FABRICATORS OF ENGINEERED MATERIAL SOLUTIONS

Resistance Temperature Detector (RTD)

RTD Terminal Block

THE GUND COMPANY		Style	Size (L x W)	Material
PART ID	RTDTERMINALBK6	Terminal Block	2.00" x 1.55"	92% Al203



The data supplied are typical values. They are not to be considered specification values. All of the information, suggestions, and recommendations about these properties and uses of the products herein are based on tests and data believed to be accurate; however, the final determination regarding the suitability of any material described herein for the contemplated application, the manner of such use, and whether the use infringes any patents is the sole responsibility of the user. There is no warranty - expressed or implied - including, without limitation, warranties of merchantability or fitness for a particular purpose. Under no circumstances shall we be liable for incidental or consequential loss or damage.



THE GUND COMPANY

MANUFACTURERS & FABRICATORS OF ENGINEERED MATERIAL SOLUTIONS

MARKETS



Switchgear



Electronics



Power Generators



Motor Applications



Transformers



Metals Processing



Electric Vehicles



Military/Aerospace



Oil & Gas



Medical



Space

OUR EXPERTISE IS YOUR COMPETITIVE ADVANTAGE

The Gund Company provides a wide range of material solutions from rigid, glass epoxy composites to high-temperature, silicone sponges.

We take a consultative approach to understanding your application by working with your engineers and buyers to find materials that fit the application. By understanding the most important material properties, we often find cost-reduction opportunities. Our Application Engineering Teams have decades of material experience and look forward to working with you on your upcoming project.

Material Families:

- Thermoset Rigid Laminates and Composites
- Flexible Laminates, Papers, Films, and Felts
- Thermoplastic Materials
- Elastomeric Materials

Our Manufacturing Capabilities Include:

- Compression Molding
- Pultrusion
- Filament & Convoluted Wound Tube
- Infusion & B-Stage Composites Lay-up and Molding
- Injection Molding
- Extrusion of Thermoplastics

Our Engineering Capabilities Include:

- Custom Material Development
- Resin Formulation
- Laboratory Testing
- Comparative Materials Evaluation



THE GUND COMPANY GLOBAL FOOTPRINT – LOCAL SERVICE

